

## BRANCH PIPE TEES

JUNE, 2001

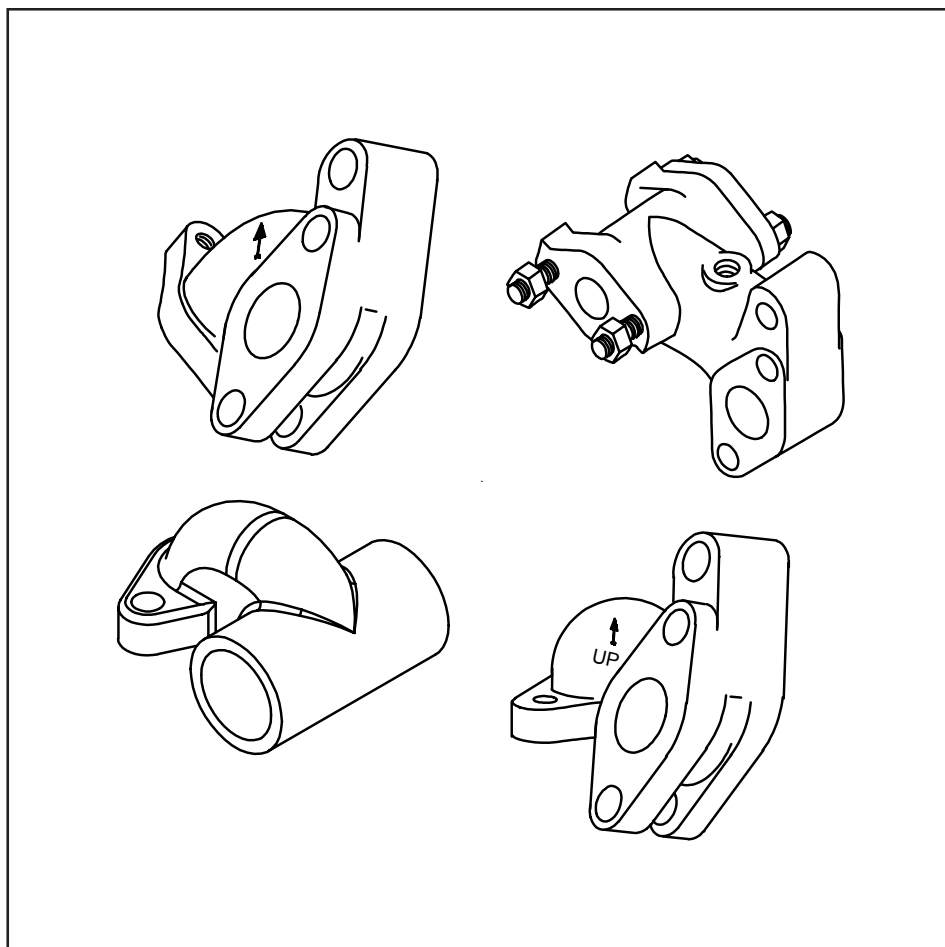
Supersedes issue dated December, 1996

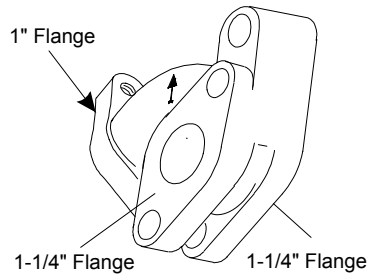
**IMPORTANT:** This catalog is published as an aid in identifying the detail parts that make up this complete device. Refer to applicable maintenance publication **BEFORE** attempting either the disassembly or the assembly of this device.

**⚠ WARNING:** At the time any part is replaced in this device, the operation of the complete device must pass a series of tests prescribed in the latest issue of the applicable Wabtec Test Specification. At the time this device is applied to the brake equipment arrangement, a stationary vehicle test must be made to ensure that this device functions properly in the total brake equipment arrangement. (Consult your local Wabtec Representative for identity of the test specification, with latest revision date, that covers this device.)

**IMPORTANT:** Only Wabtec supplied parts are to be used in the repair of this device in order to obtain satisfactory operation. Commercially available non-O.E.M. parts are unacceptable.

**NOTE:** The part numbers and their associated descriptions are the property of Wabtec Corporation and may not be replicated in any manner or form without the prior sole written consent of an Officer of Wabtec Corporation.

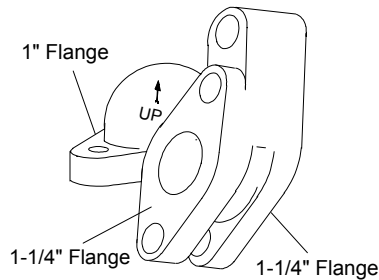




**Part No. 95490 (Recommended Standard)**

1 1/4" x 1 1/4" x 1" Branch Pipe Tee with 45° Outlet  
Approx. Net Weight: 5 lbs.

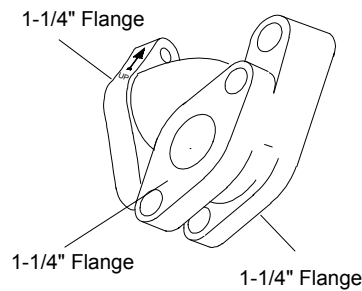
---



**Part No. 96879**

1 1/4" x 1 1/4" x 1" Branch Pipe Tee with Bottom Outlet  
Approx. Net Weight: 5 lbs.

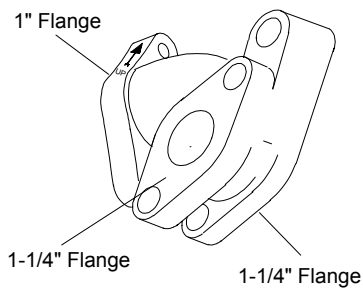
---



**Part No. 506843**

1 1/4" x 1 1/4" x 1 1/4" Branch Pipe Tee with Side Outlet  
Approx. Net Weight: 5 1/2 lbs.

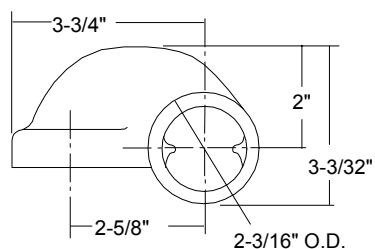
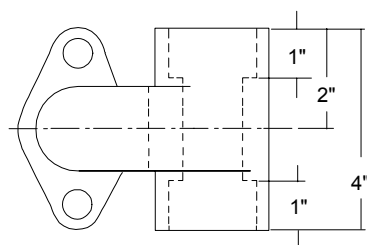
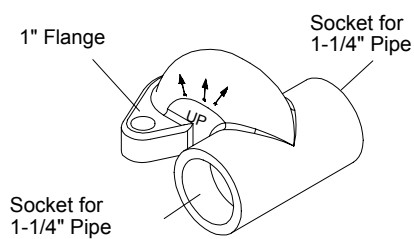
---



**Part No. 95495**

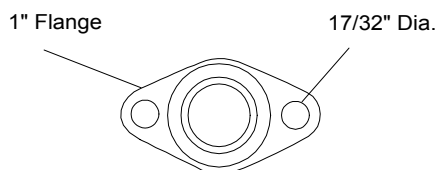
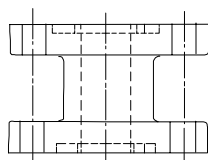
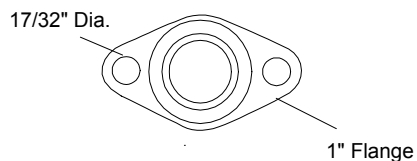
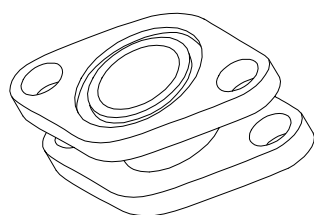
1 1/4" x 1 1/4" x 1" Branch Pipe Tee with Side Outlet  
Approx. Net Weight: 5 1/2 lbs.

**Parts Catalog**



**Part No. 575905**

1 1/4 x 1 1/4 x 1" Socket Welded Branch Pipe Tee  
 Approx. Net Weight: 5 lbs.



**Part No. 564319**

Filling Piece for 1 1/4" x 1 1/4" x 1" Branch Pipe Tee  
 Approx. Net Weight: 2 lbs.

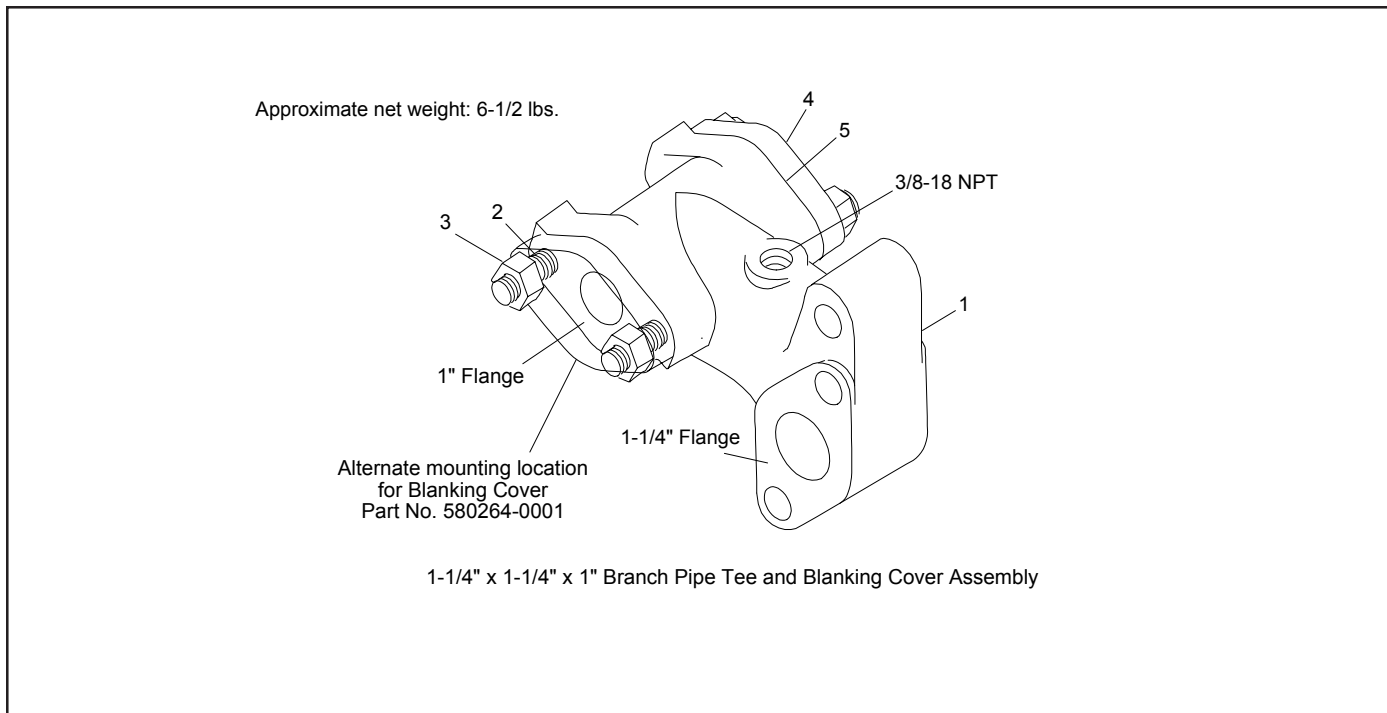


Figure 1 - Part No. 580264

### 1 1/4 x 1 1/4 x 1" BRANCH PIPE TEE, PART No. 580264 - Figure 1

Figure & Ref.No.	Customer Part No.	Wabtec Part No.	Description	Qty.
1 -		580264	<b>BRANCH PIPE TEE</b> and Blanking Cover Assembly	Ref.
1 - 1		580263	<b>.BODY</b>	1
1 - 2		523182	<b>..STUD</b> , 1/2 x 2"	4
1 - 3		502365	<b>..NUT</b> , 1/2" Hex	4
1 - 4		510019	<b>..PLATE</b> , Blanking	1
1 - 5		93986	<b>..GASKET</b> , 1" WABCOTITE Fitting	1

## Parts Catalog

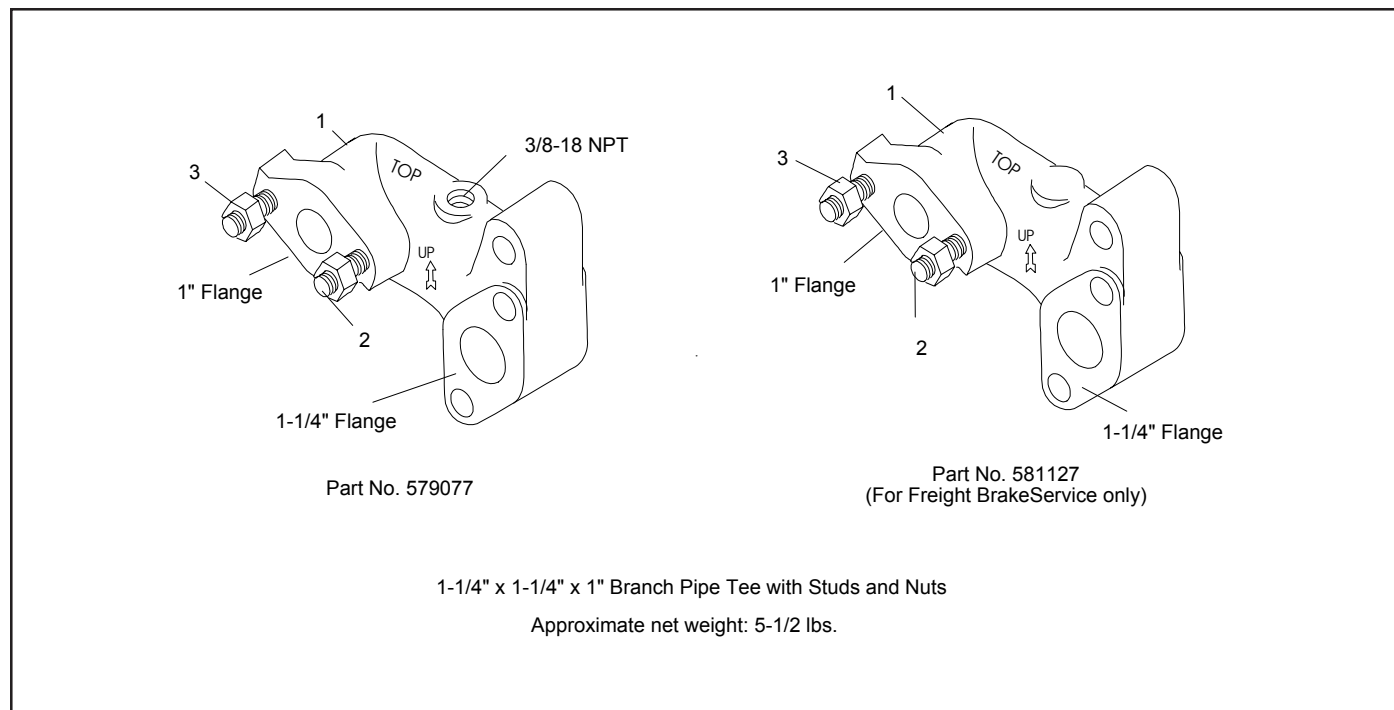


Figure 2 - Part Nos. 579077 & 581127

### 1 1/4" x 1 1/4" x 1" BRANCH PIPE TEE, PART No. 579077 - Figure 2

Figure & Ref. No.	Customer Part No.	Wabtec Part No.	Description	Qty.
2 -		579077	<b>BRANCH PIPE TEE</b> , with Studs and Nuts	Ref.
2 - 1		579081	<b>.BODY</b>	1
2 - 2		523182	<b>.STUD</b> , 1/2 x 2"	2
2 - 3		502365	<b>.NUT</b> , 1/2" Hex	2

### 1 1/4" x 1 1/4" x 1" BRANCH PIPE TEE, PART No. 581127 - Figure 2 For Freight Brake Service Only

Figure & Ref. No.	Customer Part No.	Wabtec Part No.	Description	Qty.
2 -		581127	<b>BRANCH PIPE TEE</b> , with Studs and Nuts	Ref.
2 - 1		581126	<b>.BODY</b>	1
2 - 2		523182	<b>.STUD</b> , 1/2 x 2"	2
2 - 3		502365	<b>.NUT</b> , 1/2" Hex	2



## RECOMMENDED FASTENERS BY BRANCH PIPE PART NUMBER

95490	95495	96879	506843	575905	Description	Qty.
20581	20581	20581	20581	–	<b>BOLT</b> , $\frac{5}{8}$ -11 x 4 $\frac{1}{2}$ " Hex	2
–	–	–	1879	–	<b>BOLT</b> , $\frac{5}{8}$ -11 x 2" Hex	2
–	33341	33341	–	33341	<b>BOLT</b> , $\frac{1}{2}$ -13 x 1 $\frac{7}{8}$ " Hex	2
–	–	–	–	–	<b>BOLT</b> , $\frac{1}{2}$ -13 x 2" T-Head	2
3134	–	–	–	–	<b>SCREW</b> , $\frac{1}{2}$ -13 x 1 $\frac{1}{4}$ " Hex	2
563644	563644	563644	–	–	<b>NUT</b> , $\frac{5}{8}$ " Lock	2
–	–	–	563644	–	<b>NUT</b> , $\frac{5}{8}$ " Lock	4
–	563643	563643	–	563643	<b>NUT</b> , $\frac{1}{2}$ " Lock	2

### WABCO Freight Car Products

1001 Air Brake Avenue  
 Wilmerding, Pennsylvania 15148  
 (412) 825-1000 • Fax (412) 825-1019

[www.wabtec.com](http://www.wabtec.com)

475 Seaman Street  
 Stoney Creek, Ontario L8E 2R2  
 (905) 561-8700 • Fax (905) 561-8705