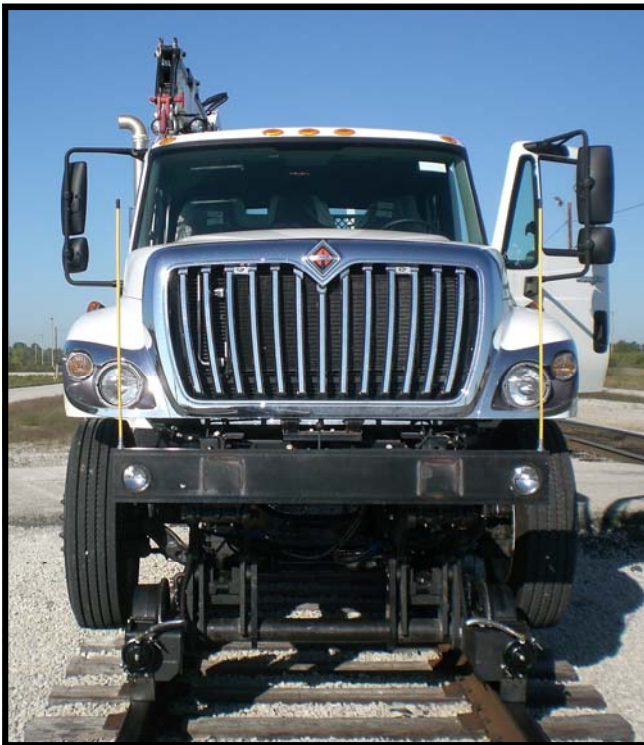


RAFNA R-1100 Railgear

Description:

G&B Specialties' Model R-1100 railgear is designed for vehicles with GVWR's of 33,000 lbs or larger, using high carbon steel and hardened steel forgings. The R-1100 front railgear utilizes the vehicle's front suspension and the frame to lift the front wheels off the track approximately two inches. The dual scissor rear railgear attaches to the vehicle's frame behind the spring hangers. The scissor design makes for a more speedy operation of getting the vehicle on track and off track and allows for an X and Y plane adjustment. With the R-1100, there are no limits imposed. If the vehicle can support the load, so can the railgear.



Standard Features:

- Precision Machined Forged Steel Wheels
- Double Acting Hydraulic Cylinders
- Heavy Duty Tapered Roller Bearings
- Non-Insulated Forged Steel Wheels
- Grease Fittings at All Wear Points
- PTO Application
- Heavy Duty Tapered Roller Bearings
- Built-in Derail Skids
- Front and Rear Rail Sweeps
- Corrosion Resistant, Long-Life Fasteners
- Mechanical Steering Wheel Lock

Optional Features:

- Air Brake Package—Front and Rear
- Insulated Forged Steel Wheels
- Mechanical Cable Locking System

RAFNA R-1100 Railgear



Vehicle Classification:

- GVWR—33,000 lbs and Above
- GAWR (Front) - 20,000 lbs
- GAWR (Rear) - 46,000 lbs
- Capacity—40,000 lbs per Railgear Axle at 20 MPH

Vehicle Applications:

- Freightliner
- International
- Kenworth
- Sterling



Installed Weights:

- Total—2,570 lbs
- Front—1,385 lbs
- Rear—1,185 lbs

Wheels:

- Material—Forged Steel
- Tread—16" Diameter
- Rear—18" Diameter
- Bearings— HD Tapered Roller



G&B Specialties

P.O. Box 305

535 West Third Street

Berwick, PA 18603

570-752-5901

www.rafna.com

www.wabtec.com

 **G&B Specialties**
A Wabtec subsidiary