

INNOVATIONS IN ACCESS



MIRAGE® F9TF™ WHEELCHAIR LIFT

For more than a decade, the Ricon Mirage F9TF has been chosen by more North American Public Transportation Agencies than any other motorcoach-mounted wheelchair lift. With its rugged stainless steel and aluminum construction, the Mirage F9TF will provide many years of reliable service.

- In service with most major U.S. Public Transit Agencies
- Exclusive Dura-Touch™ hand control pendant
- Electrically interlocked occupant restraint belt system
- Ultra sonic, contactless threshold warning system
- Two-year limited warranty, extended warranty available

THE MOST WIDELY USED
MOTORCOACH LIFT
IN NORTH AMERICAN PUBLIC
TRANSPORTATION



RICON® MIRAGE® F9TF™ WHEELCHAIR LIFT



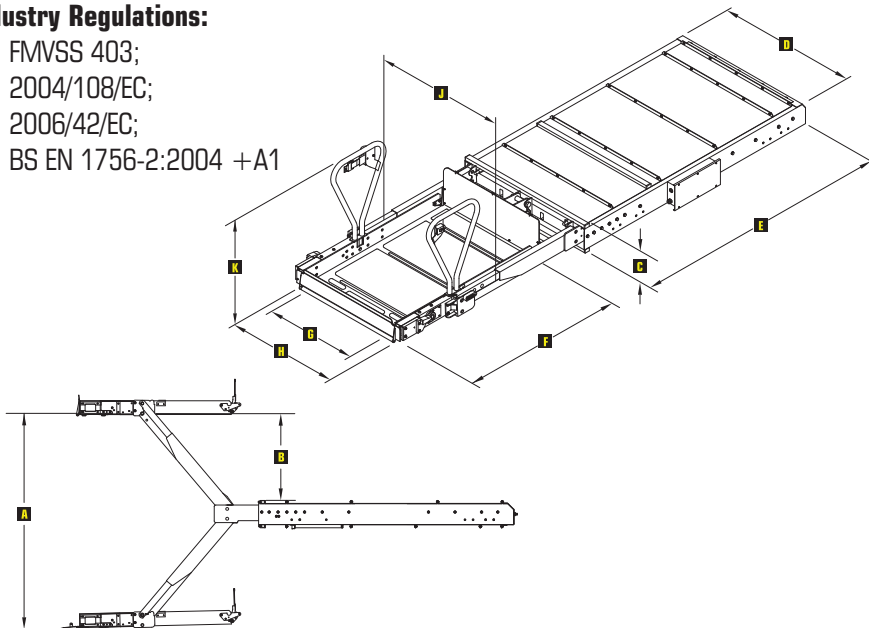
ELECTRICALLY INTERLOCKED RESTRAINT BELT – The most effective wheelchair retention device available.

SPECIFICATIONS:

PowerElectro-Hydraulic (power up/gravity down)
 Operating Voltage Range 24V DC21-27 Volts
 Pump Rating @ 24 VDC.....1800 psi, 1250 watts
 Hydraulic Cylinder.....ø3.0", single acting
 Rated Load Capacity660 lbs / 300 kg
 Manual Backup (Up)Hand pump
 Manual Back Up (Down)Pressure release valve
 Lift Weight.....Approx. 700 lbs / 317 kg

Compliant with Applicable Industry Regulations:

- FMVSS 403;
 2004/108/EC;
 2006/42/EC;
 BS EN 1756-2:2004 +A1



Inches / Millimeters

	A ¹	B ²	C	D ³	E
MODEL	Floor to Ground Travel	Travel Above	Enclosure Height	Enclosure Width	Enclosure Length
F9TF-DE/DS	65.0 / 1651	26.0 / 660	9.0 / 229	43.0 / 1092	81.0 / 2057

Inches / Millimeters

F	G	H	J	K
Usable Platform Length	Usable Platform Width	Clear Entry Width	Width Traveling Frame	Handrail Height
48.0 / 1292	32.0 / 813	31.75 / 806	41.4 / 1052	30.5 / 775

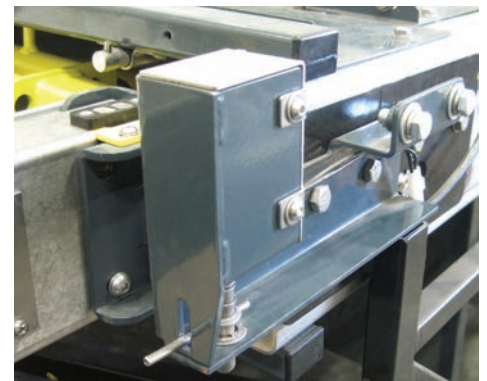
NOTE 1: Maximum available, requires vehicle specific engineering.

NOTE 2: Measured from the surface of the platform.

NOTE 3: Application dimension is inclusive bolt heads.



EXCLUSIVE DURA-TOUCH™ PENDANT



Patented Ricon Sto-Loc™ technology secures the lift when stowed.

CONTACT:

National Sales Manager –

Tony Ward 501-733-8001

West – Larry McNutt 818-267-3075

Central – Rick Thompson 574-262-1239

East – Maritza Valentin 215-375-4819

Canada – JF Viau 438-868-7093



RICON CORPORATION
 7900 Nelson Road
 Panorama City, CA 91402
 1-800-322-2884